

Chapter 8

Instructions for Installing Auxiliary Fittings

Due to the possibility of extreme high pressures being generated while servicing pipeline valves, these fittings are designed with a one-piece body.

DO NOT remove fittings from pressurized valves.

The threads which connect the fitting to the valve are found on the body of the fitting. Wrap these threads with thread tape or other suitable thread lubricant. DO NOT use Lock-Tite or similar thread locking material as it may adversely effect the ball check device inside the fitting.

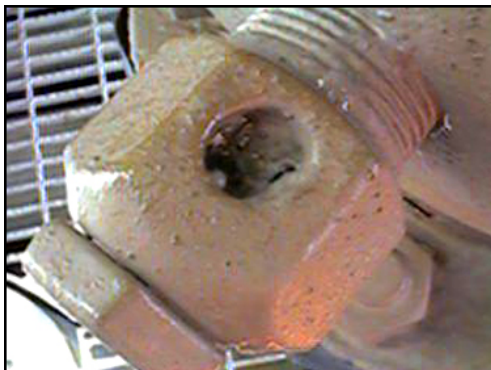
Attach the proper size wrench to the fitting body only when tightening and removing auxiliary valve fittings.

DO NOT tighten the fitting into the valve by the bolt or cap.

Screw the fitting into the valve tightly, being careful not to cross thread the fitting. Should the threads begin tightening prematurely, back the fitting out and inspect for thread damage. Re-tape the threads and repeat as necessary.

Once tightly installed, service fittings as described below.

Body Vent Fittings

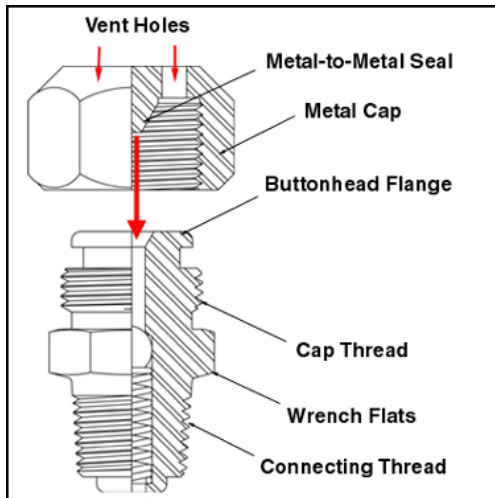


Turn the bolt in and out several times and lubricate thread with penetrating oil or similar light oil. Brush the threads with Sealweld® Eterna-Lube 1000 anti-seize compound or equivalent. Leave the bolt screwed in and tighten down snugly with a wrench. Use a back up wrench on the body

To open: Place wrench on bolt and turn counter-clockwise, making sure to use a back up wrench on the fitting body. DO NOT unscrew the bolt from the body. Once the valve is pressurized, **beware** of escaping product from the valve. Follow company safety regulations for venting pressurized valves.

NOTE: DO NOT OVER-TIGHTEN.

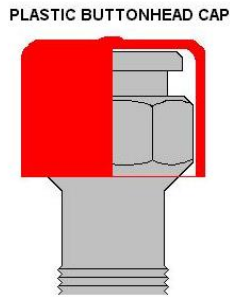
Capped Sealant Injection Fittings



Lubricate the cap threads with penetrating oil or similar light oil, then tighten. ALWAYS put a back-up wrench on the body wrench flats when tightening and when removing cap.

Capped Sealant Injection Fitting

Giant Buttonhead Sealant Injection Fittings



Once the fitting is installed, place a plastic cap over the buttonhead flange to keep dirt and grit away from the fitting.

Part Number F-BHCAPS - Giant Buttonhead Sealant Injection Fitting

Packing Injectors



Back the bolt all the way out of the body then lubricate threads with penetrating oil or similar light oil. Insert screw bolt back into body and tighten. Be sure to use a back up wrench on the body when tightening and removing.

Packing Injector