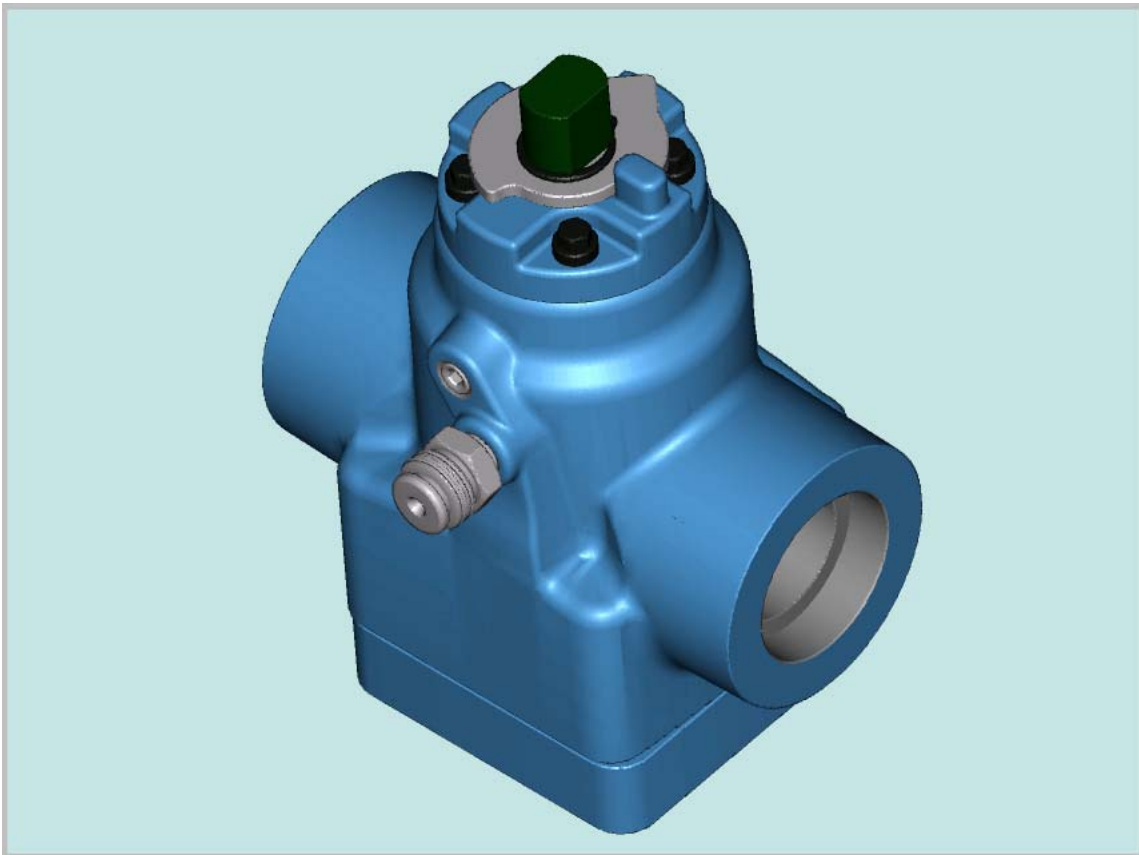


Dynamic Balance Plug Valve

The Dynamic Balance style plug valve utilizes a hole in the bottom of the plug to equalize pressures across the valve. This feature will ease operation with pressure differential across the valve, hence the name dynamic balance. Each plug is individually lap fitted to each body which provides a tight reliable seal. As in all plug valves, sealant is a mechanical component of the valve to assist in the metal to metal mated surfaces. Plug adjustment is possible by utilizing the plug adjustment on the bottom of the valve. The adjustment pin is covered by a protective cap and features an Allen Head slot.



If the 3KO is not displayed properly:

- Do you have NGRAIN Viewer installed on your computer? If not, go to <http://www.ngrain.com/products/viewer/default.aspx>, where you can register to download a free copy.
- Did you select **Disable Macros** when you opened your document? If so, close then reopen the document and select **Enable Macros** when prompted.
- Is the security level on your computer set to **High**? If so, point to **Macro** on the **Tools** menu and then click **Security**. Set the security level to **Medium** on the **Security Level** tab and select all check boxes on the **Trusted Sources** tab.